

2C



## Cushion Rod Bearing Removal and Installation

Refer to [Cushion Rod Removal and Installation](#).

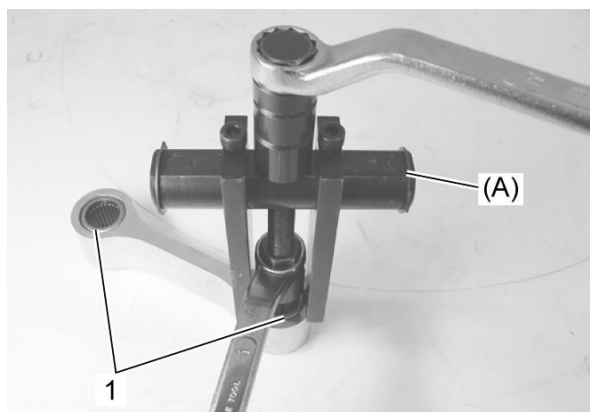
[Reference: Rear Suspension Components](#)

### Removal

- 1) Remove the cushion rod bearings (1) with the special tool.

**Special Tool**

**(A): 09921-20240**



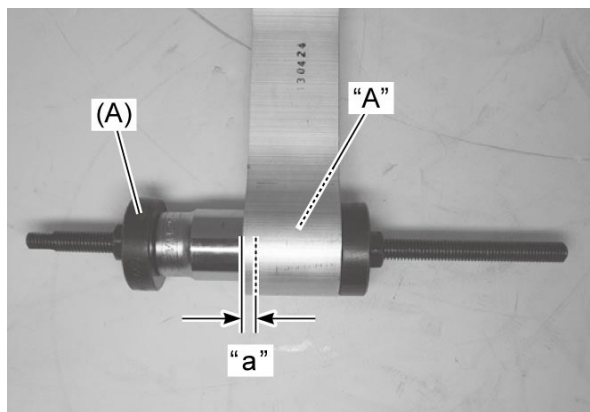
### Installation

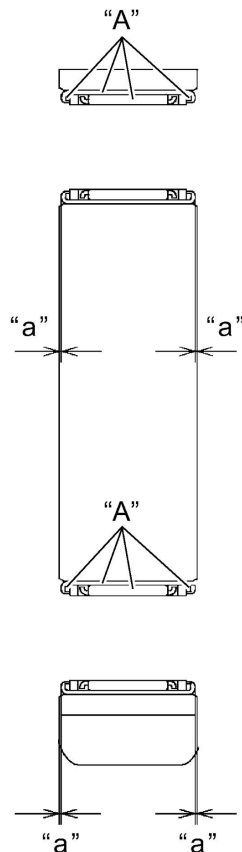
- 1) Apply a small quantity of the grease to housing.
- 2) Press the new bearings into the cushion rod to the depth "a" of 0.5 mm (0.02 in) from the edge with the special tool and suitable size socket wrench.

**"A": Grease 99000-25011 (SUZUKI SUPER GREASE A)**

**Special Tool**

**(A): 09924-84521**





**3)** Apply grease to the bearings and dust seals.

**"A": Grease 99000-25011 (SUZUKI SUPER GREASE A)**

